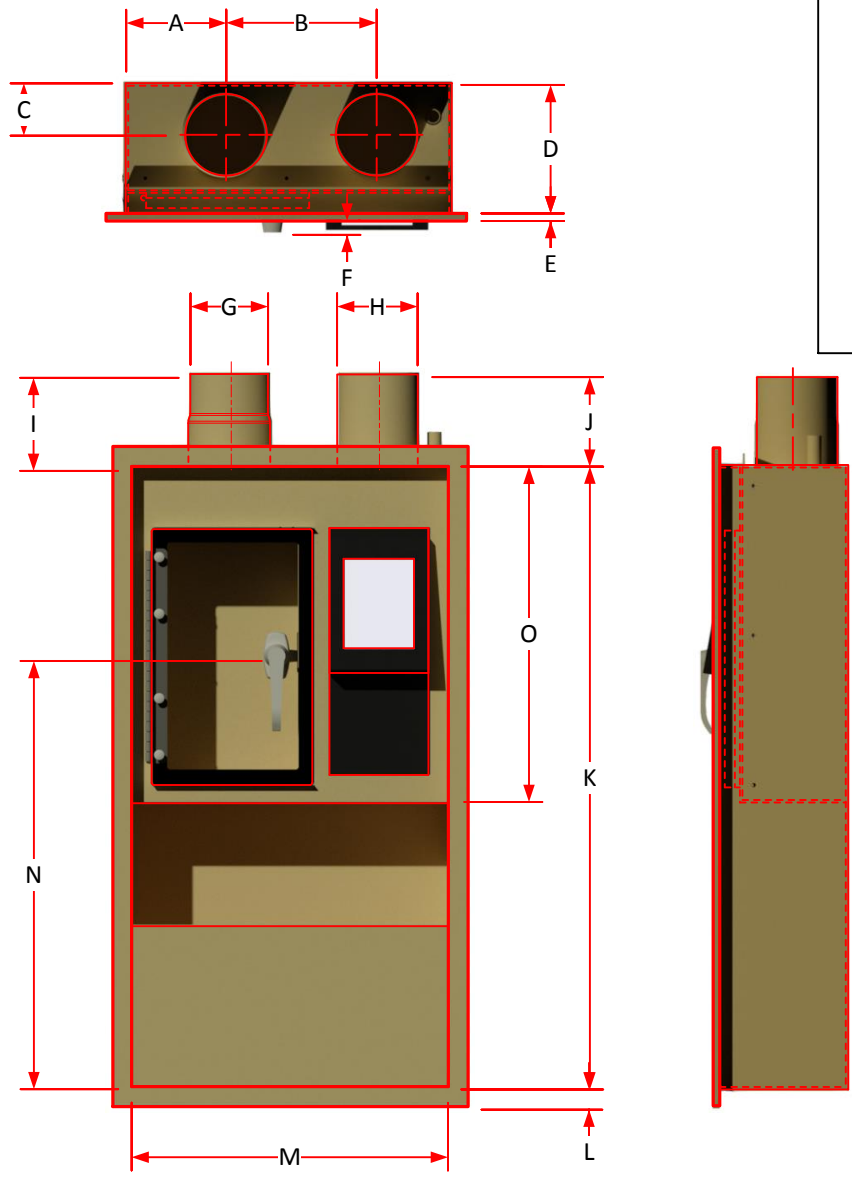


Dimensional Data

Colombo Direct Delivery System

Station, 4" Single-Unit Main DD Touch Series
 Recessed Style w/Carrier Storage*
 Part# 13326



power	24VDC
weight	49 lbs.

SIZE	PART NO.	A	B	C	D	E	F	G	H
4"	13326	5.00	7.25	2.62	6.38	.38	1.25	4.00	4.00

SIZE	PART NO.	I	J	K	L	M	N	O
4"	13326	4.25	4.25	31.00	1.00	16.00	21.38	17.00

*Optional carrier storage w/frame add-on shown

Rev - 1.0
07-09-17



DISCLOSURE STATEMENT

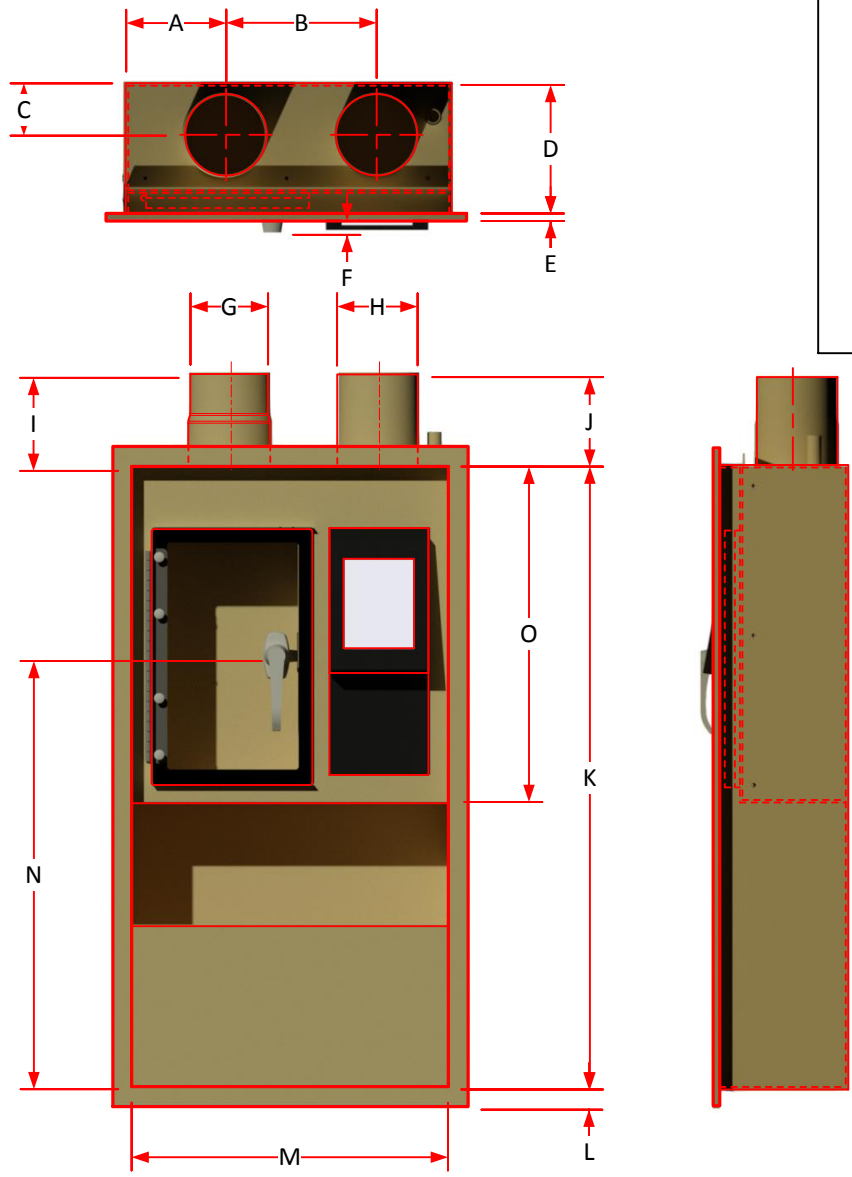
This drawing and design are property of COLOMBO Sales & Engineering, Inc. and may not be disclosed to third parties without the expressed written permission of COLOMBO Sales & Engineering, Inc.

Colombo Sales and Engineering, Inc.
 10421 Enterprise Dr. • Davisburg, MI 48350
 Ph: 800.547.2820 • Fx: 248.546.7567

Dimensional Data

Colombo Direct Delivery System

Station, 4" Single-Unit Remote DD Touch Series
 Recessed Style w/Carrier Storage*
 Part# 13327



power	24VDC
weight	49 lbs.

SIZE	PART NO.	A	B	C	D	E	F	G	H
4"	13327	5.00	7.25	2.62	6.38	.38	1.25	4.00	4.00

SIZE	PART NO.	I	J	K	L	M	N	O
4"	13327	4.25	4.25	31.00	1.00	16.00	21.38	17.00

*Optional carrier storage w/frame add-on shown

Rev - 1.0
07-09-17



DISCLOSURE STATEMENT

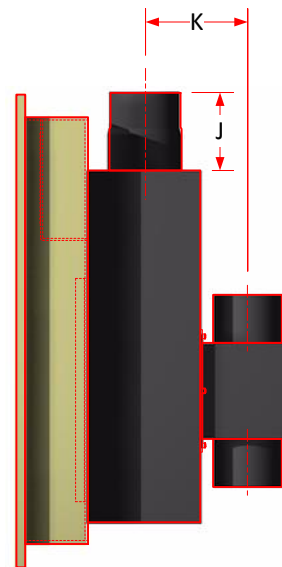
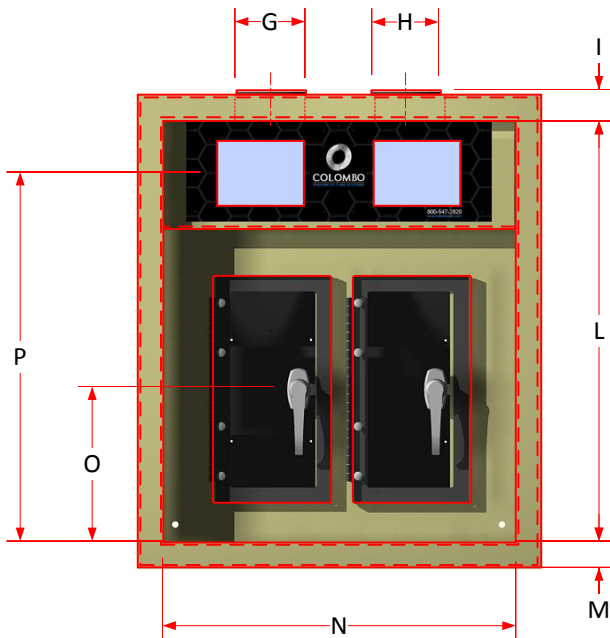
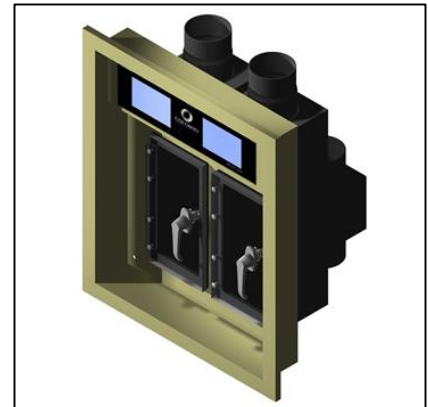
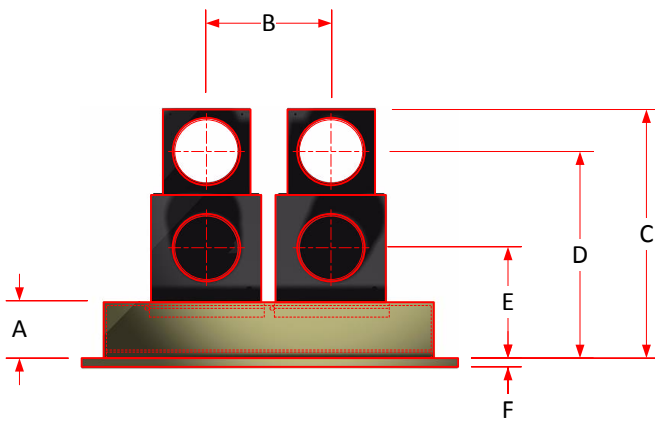
This drawing and design are property of COLOMBO Sales & Engineering, Inc. and may not be disclosed to third parties without the expressed written permission of COLOMBO Sales & Engineering, Inc.

Colombo Sales and Engineering, Inc.
 10421 Enterprise Dr. • Davisburg, MI 48350
 Ph: 800.547.2820 • Fx: 248.546.7567

Dimensional Data

Colombo Direct Delivery System

Station, 4" 2-Unit Main DD Touch Series
Part# 13301



power	24VDC
weight	72 lbs.

SIZE	PART NO.	A	B	C	D	E	F	G	H
4"	13301	4.00	7.65	15.25	12.62	6.75	.62	4.00	4.00

SIZE	PART NO.	I	J	K	L	M	N	O	P
4"	13301	1.62	4.50	5.90	24.00	1.50	20.00	8.65	20.85

Rev - 1.0
05-24-17



DISCLOSURE STATEMENT

This drawing and design are property of COLOMBO Sales & Engineering, Inc. and may not be disclosed to third parties without the expressed written permission of COLOMBO Sales & Engineering, Inc.

Colombo Sales and Engineering, Inc.

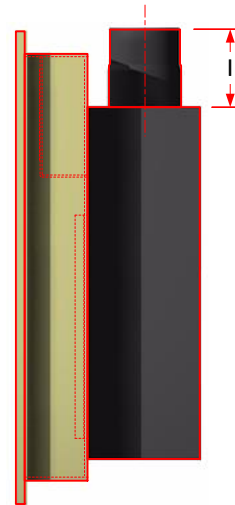
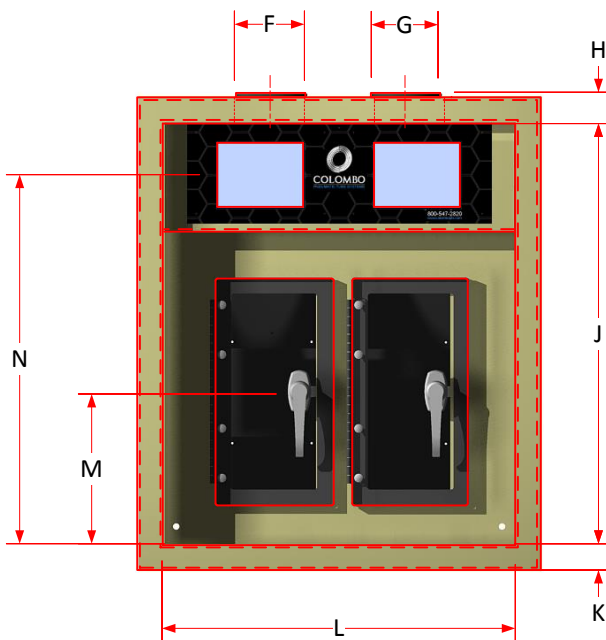
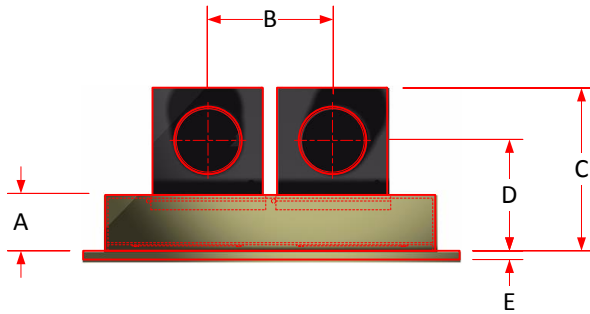
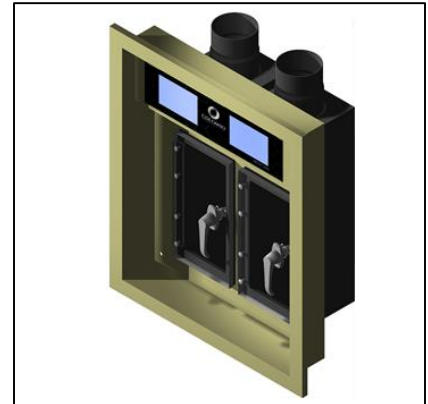
10421 Enterprise Dr. • Davisburg, MI 48350

Ph: 800.547.2820 • Fx: 248.546.7567

Dimensional Data

Colombo Direct Delivery System

Station, 4" 2-Unit Remote DD Touch Series
 Part# 13325



power	24VDC
weight	62 lbs.

SIZE	PART NO.	A	B	C	D	E	F	G	H
4"	10869	4.00	7.65	10.00	6.75	.62	4.00	4.00	1.62

SIZE	PART NO.	I	J	K	L	M	N
4"	10869	4.50	24.00	1.50	20.00	8.65	20.85

Rev - 1.0
 07-17-17



DISCLOSURE STATEMENT

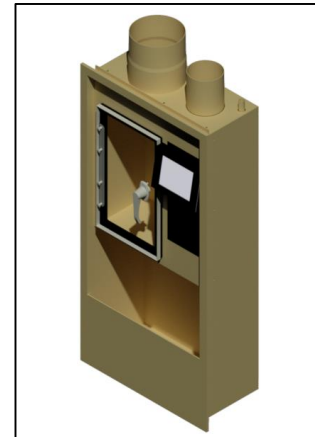
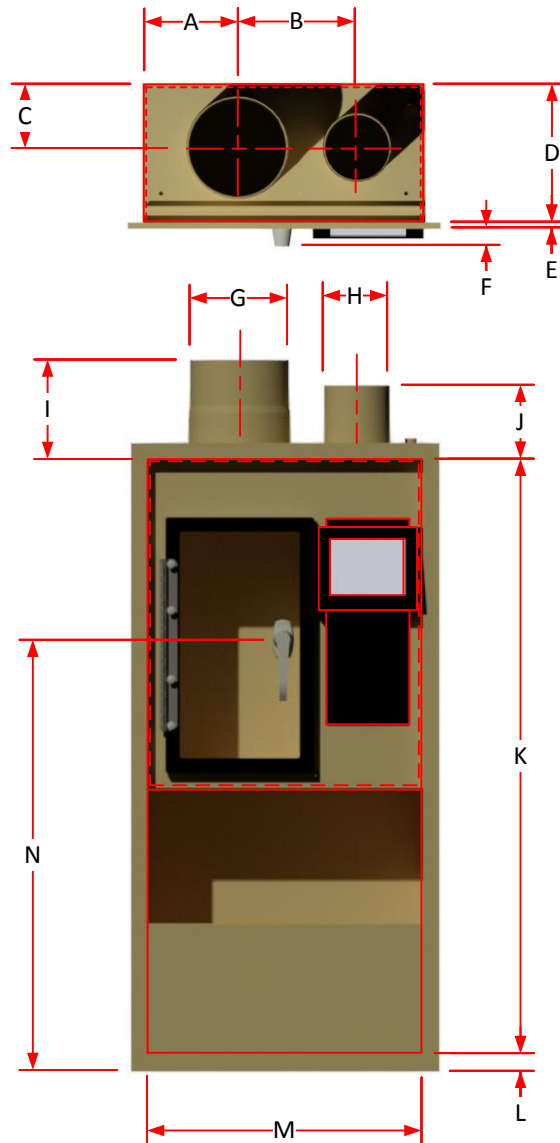
This drawing and design are property of COLOMBO Sales & Engineering, Inc. and may not be disclosed to third parties without the expressed written permission of COLOMBO Sales & Engineering, Inc.

Colombo Sales and Engineering, Inc.
 10421 Enterprise Dr. • Davisburg, MI 48350
 Ph: 800.547.2820 • Fx: 248.546.7567

Dimensional Data

Colombo Direct Delivery System

Station, 6" Single-Unit Main DD Touch Series
 Recessed Style w/Carrier Storage*
 Part# 13328



power	24 VDC
weight	65 lbs.

SIZE	MAIN	REMOTE	A	B	C	D	E	F	G	H
6"	10918	10921	5.50	7.75	3.75	8.75	.38	1.25	6.00	4.00

SIZE	MAIN	REMOTE	I	J	K	L	M	N
6"	10918	10921	5.00	5.00	36.25	1.00	17.00	25.00

*Optional carrier storage w/frame add-on shown

Rev - 1.0
07-09-17



COLOMBO
PTP SYSTEMS
www.colombopt.com

DISCLOSURE STATEMENT

This drawing and design are property of COLOMBO Sales & Engineering, Inc. and may not be disclosed to third parties without the expressed written permission of COLOMBO Sales & Engineering, Inc.

Colombo Sales and Engineering, Inc.

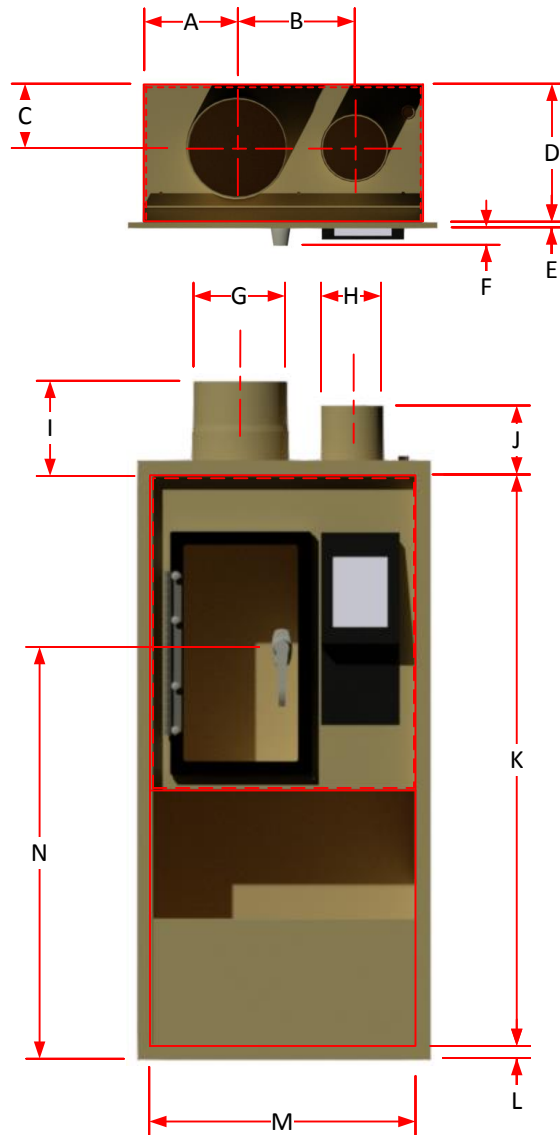
10421 Enterprise Dr. • Davisburg, MI 48350

Ph: 800.547.2820 • Fx: 248.546.7567

Dimensional Data

Colombo Direct Delivery System

Station, 6" Single-Unit Remote DD Touch Series
 Recessed Style w/Carrier Storage*
 Part# 13329



power	24 VDC
weight	65 lbs.

SIZE	MAIN	REMOTE	A	B	C	D	E	F	G	H
6"	10918	10921	5.50	7.75	3.75	8.75	.38	1.25	6.00	4.00

SIZE	MAIN	REMOTE	I	J	K	L	M	N
6"	10918	10921	5.00	5.00	36.25	1.00	17.00	25.00

*Optional carrier storage w/frame add-on shown

Rev - 1.0
 07-09-17



COLOMBO
 PTP SYSTEMS
www.colombopt.com

DISCLOSURE STATEMENT

This drawing and design are property of COLOMBO Sales & Engineering, Inc. and may not be disclosed to third parties without the expressed written permission of COLOMBO Sales & Engineering, Inc.

Colombo Sales and Engineering, Inc.

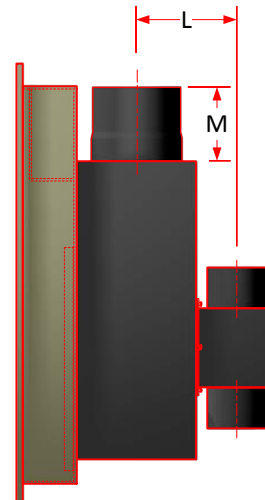
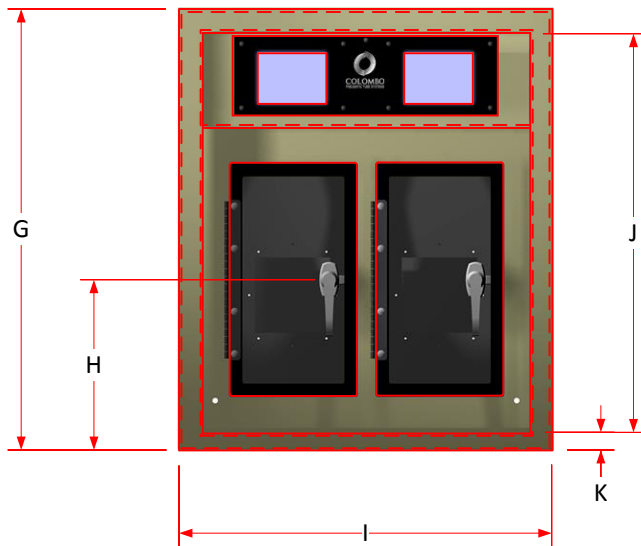
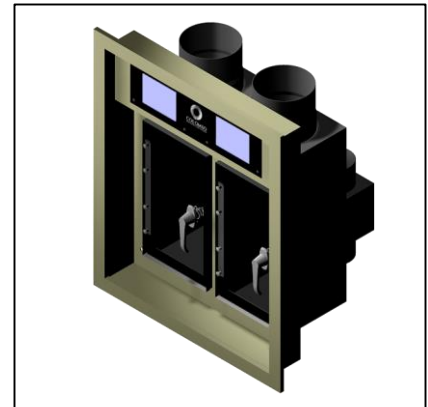
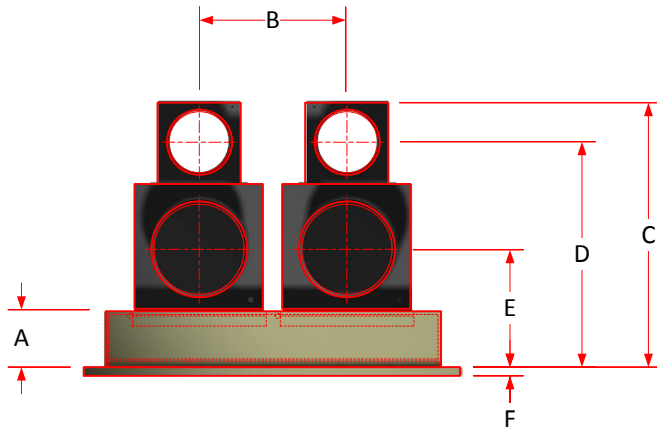
10421 Enterprise Dr. • Davisburg, MI 48350

Ph: 800.547.2820 • Fx: 248.546.7567

Dimensional Data

Colombo Direct Delivery System

Station, 6" 2-Unit Main DD Touch Series
Part# 13312



power	24VDC
weight	86 lbs.

SIZE	PART NO.	A	B	C	D	E	F	G	H
6"	13312	4.00	9.75	17.00	14.50	7.50	.62	29.50	11.50

SIZE	PART NO.	I	J	K	L	M
6"	13312	25.00	26.25	1.50	6.75	5.00

A combination station serving both a 6" and a 4" system is available and uses the same dimensions as the 6in.

Rev - 1.0
05-24-17



DISCLOSURE STATEMENT

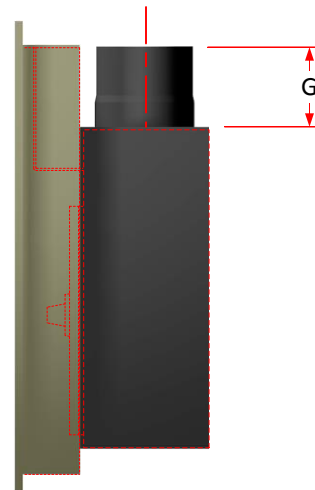
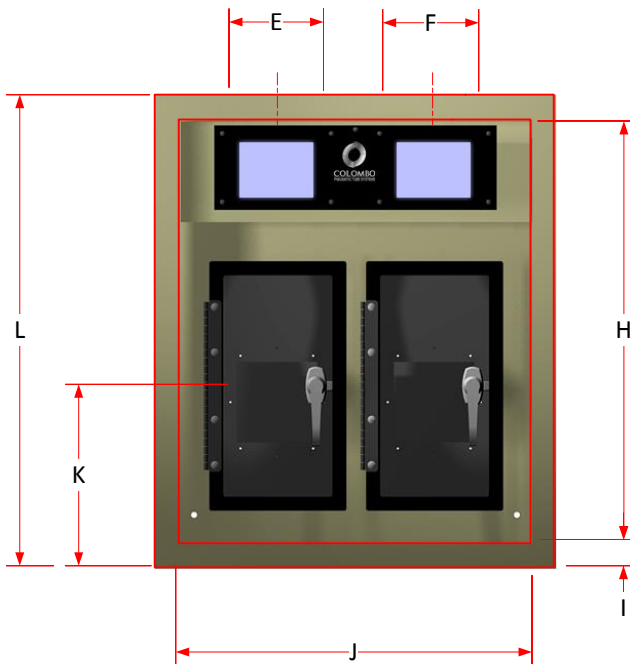
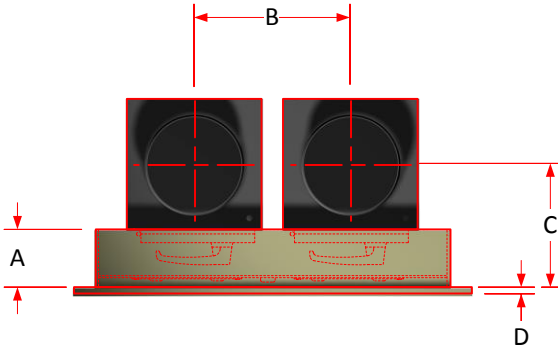
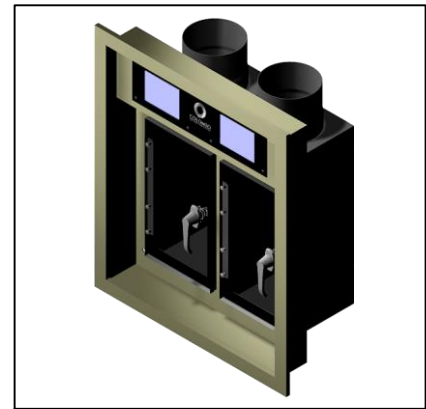
This drawing and design are property of COLOMBO Sales & Engineering, Inc. and may not be disclosed to third parties without the expressed written permission of COLOMBO Sales & Engineering, Inc.

Colombo Sales and Engineering, Inc.
10421 Enterprise Dr. • Davisburg, MI 48350
Ph: 800.547.2820 • Fx: 248.546.7567

Dimensional Data

Colombo Direct Delivery System

Station, 6" 2-Unit Remote DD Touch Series
Part# 13330



power	24VDC
weight	74 lbs.

SIZE	PART NO.	A	B	C	D	E	F	G	H
6"	11001	4.00	9.75	8.00	.50	6.00	6.00	6.50	26.50

SIZE	PART NO.	I	J	K	L
6"	11001	1.50	22.00	10.25	23.88

A combination station serving both a 6" and a 4" system is available and uses the same dimensions as the 6" station.

Rev - 1.0
07-09-17



DISCLOSURE STATEMENT

This drawing and design are property of COLOMBO Sales & Engineering, Inc. and may not be disclosed to third parties without the expressed written permission of COLOMBO Sales & Engineering, Inc.

Colombo Sales and Engineering, Inc.
10421 Enterprise Dr. • Davisburg, MI 48350
Ph: 800.547.2820 • Fx: 248.546.7567